

## Auckland's Lifelines Utilities

Working together to make our region more resilient

### Ten years on from the first Auckland Lifelines Project

Between 1995 and 1999, Auckland's lifeline utilities collectively assessed the impact of various hazards on Auckland's infrastructure and looked at how we could improve the region's resilience to those hazards. It's been over ten years since this first "Auckland Engineering Lifelines Project".

Since then, the Auckland Engineering Lifelines Group (AELG) has completed many of the improvements identified in the first project.

*If you're interested to find out more about our work over the last ten years, see reports on our website... [http://www.aelg.org.nz/reports/reports\\_home.cfm](http://www.aelg.org.nz/reports/reports_home.cfm)*

What we know about Auckland's hazardscape has changed over this time and our infrastructure has grown and changed as well. Our community exposure to utility failure is also increasing as we become more reliant on technology. It's time for the AELG to move into the next phase of the *Auckland Engineering Lifelines Project*.

### The Project Aims to .....

Assess the impact of hazards on lifeline infrastructure, the consequential impacts on the broader community, and identify measures to mitigate these impacts.

Update the Auckland Engineering Lifelines Project Report with latest available knowledge and information.

*For more detail on the project brief, go to the Projects area of our website.*

*<http://www.aelg.org.nz/projects/current-projects-home.cfm>*



### Lifeline Utilities will benefit:

By participating in this project, each utility will:

- Have the latest hazard information available in the Auckland region.
- Find out the critical lifelines and community sites in Auckland, and the extent to which these sites rely on utility supply to function.
- Understand the direct probable impact of hazards on their assets and service.
- Understand the impact of hazards on other utilities that they rely on, and the knock-on impact to their own services.
- With this knowledge, be able to plan for and recover better from disasters.

Participation will include attending workshops, contributing to hazard impact analysis and report content. Past project members advise:

**"The more you put in, the more you get back"**



## Auckland's Lifelines Utilities

Working together to make our region more resilient

### Understanding Community Reliance on Utilities

To understand impacts of utility failure on the region, we need to understand the ability of critical community services to function without utilities.

As part of this Project we will be engaging with other critical community sectors such as emergency services, health, banking and food supply. We will want to find out where the critical supply points are and what utility services they require for those sites to function.

### Our Project Team

Our project structure is shown in the Figure below (Project Committee members are shaded green). If you're on the diagram, expect to be contacted soon if you haven't already.

### The 2010 Programme

In 2010 we propose 2-monthly workshops with utilities and stakeholder groups:

**18th March (9.30AM-12.30PM).** To engage with critical stakeholders about utility dependency and to update the 'infrastructure hotspots' sites.

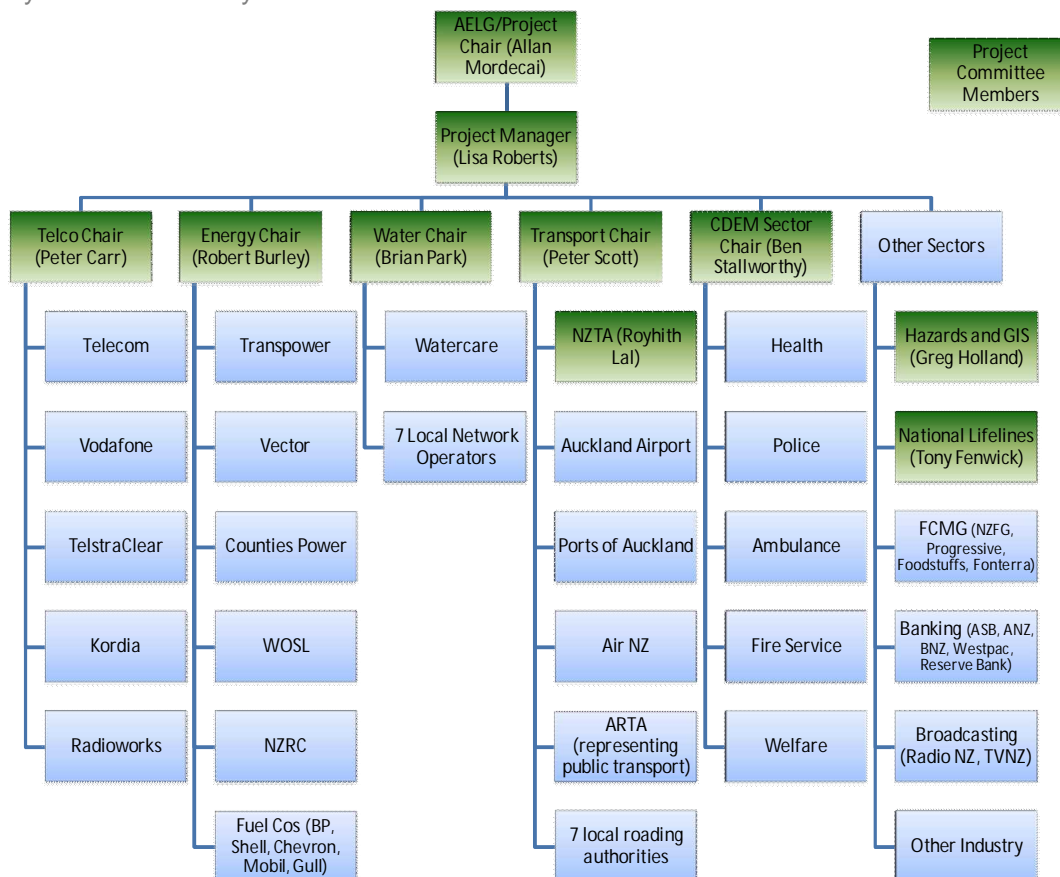
**19th May (9.30AM-12.30PM).** Volcanic hazard impact analysis, drawing on research knowledge gained since the first project.

**14th July (9.30AM-12.30PM).** Tsunami hazard impact analysis using latest inundation mapping.

Other dates to be announced.

### The Project is funded by:

Auckland Engineering Lifelines Group members (see their logos on the front page).



**For more information please contact...**

Lisa Roberts: AELG Project Manager ([lroberts@tra.co.nz](mailto:lroberts@tra.co.nz)) or Allan Mordecai: AELG Project Chair. ([allan.mordecai@kordia.co.nz](mailto:allan.mordecai@kordia.co.nz))

